

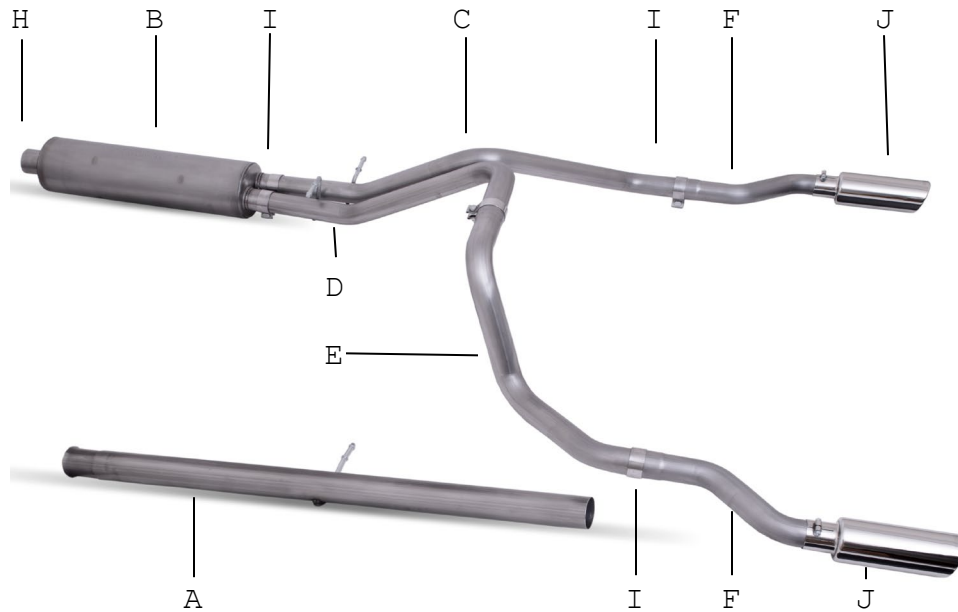


INSTALLATION INSTRUCTIONS

Chevrolet Silverado/ GMC Sierra 2500HD/3500HD Truck 6.6L GAS, 2/4wd

Crew Cab, Double Cab, Regular Cab- Long Bed

PART #65713



ITEM	PART #	QTY	DESCRIPTION
A	999701103S	1	3.5" Stainless Headpipe w/ Welded Hanger
B	758351S	1	Superflow SFT Muffler
C	999701104S	1	2.5" Passenger side Overaxle pipe
D	999701105S	1	2.5" Driver Side Overaxle pipe (A)
E	999701106S	1	2.5" Driver Side Overaxle pipe (B)
F	999701017S	2	2.5" Exit pipe
G	800047	1	Driver Side Rear Exhaust Hanger
H	4170	1	3.5" U-Bolt clamp
I	5762	5	2.5" Stainless steel band clamp
J	500640	2	4.0" Rolled Polished Stainless Tip
K	4240	1	Rubber Grommet
L	BO-906	2	Exhaust Hanger Bolt Kit/Spare Tire Safety Cord Bracket Kit
M	BO-1028	1	Head Pipe Bolt Kit

Thank you for purchasing our Gibson Exhaust system for your vehicle.

If you need further assistance, please do not hesitate to call our technical dept at (800) 528-3044

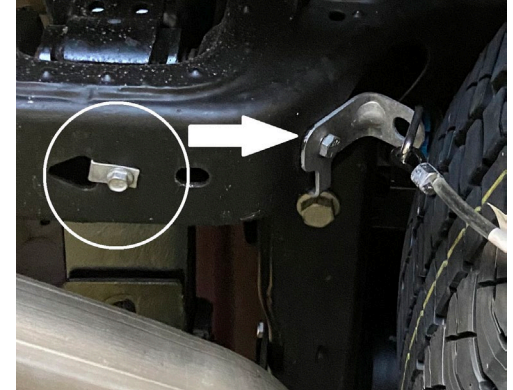
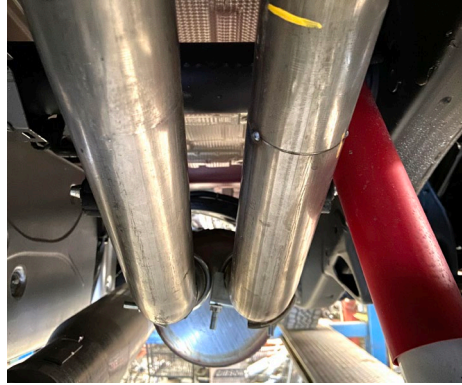
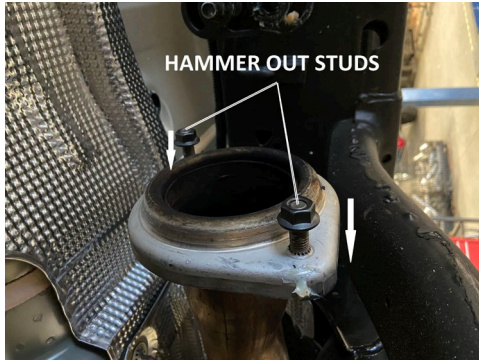
Monday through Friday, 8:00 am to 5:00 pm. 02/23

EXHAUST INSTALLATION

WHEN INSTALLING THIS EXHAUST SYSTEM MAKE SURE TO USE ALL THE PROPER SAFETY PRECAUTIONS. USE JACK STANDS WHEN UNDER TRUCK, SET PARKING BRAKE, BLOCK TIRES AND USE SAFETY GLASSES.

DO NOT WORK WITH HOT PIPES!!!

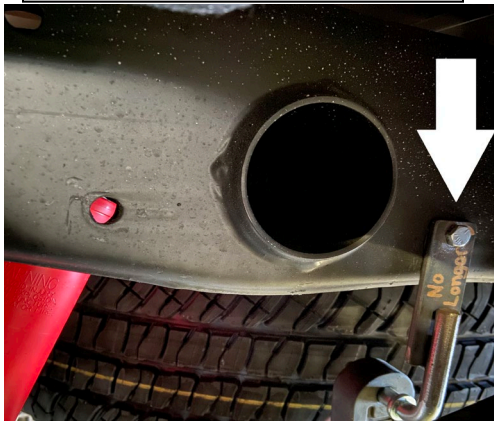
1. Disconnect the negative battery cable before removal of the OEM Exhaust. This will allow the computer to reset and recognize the new exhaust. Lay out the exhaust on the floor so it looks like the drawing and compare parts with manual. Remove the factory exhaust by cutting behind the factory muffler. Once the tail pipe has been removed un-bolt the muffler and head pipe at the flanges located behind the catalytic converters. Use wd-40 or another type of penetrating oil to remove the rubber grommets. Do not damage these they will be re used.



2 First you'll need to unbolt the factory flange and remove the exhaust. Next, hammer out the studs protruding from the factory flange, then install head pipe #A and tighten with allowance for adjustment using Bolt Kit #M.

3. Install supplied 3½" clamp #H onto inlet end of new muffler #B and slip onto end of the head pipe with 2-1¼" inserted into muffler. Muffler outlets will sit level. Tighten with allowance for adjustment.

4. Relocate the the factory spare tire cable bracket to ten hole closer to the spare tire using bolt kit # L. You can install the passenger side overaxleipe. Note all hangers will sit in the rubber hangers level.



5. Install the Driver side hanger into the factory existing hole in frame. Install the Driver side pipes. Keep everything loose until everything is installed.

6. With proper clearance from spare tire, install the exhaust tip onto the tailpipe. The system was designed to have the tip 1" below the quarter panel of the vehicle. Note you can adjust the tip position inward or outward with rotation of the exit pipes.

7. With a minimum of 1.5" clearance on all pipes begin to tighten down all clamp connections from the front head pipe back. Be sure to double check all clearance after your first heat cycle.

"MAKE SURE YOU HAVE A 1" CLEARANCE ON ALL PIPES FROM ALL RUBBER BRAKE LINES, SHOCK BOOTS, TIRES, ETC..." TORQUE ALL CLAMPS TO APPROX. 100 TO 150 FT LBS.