



INSTALLATION INSTRUCTIONS

Can-Am Maverick R

Dual Rear Black Ceramic Coated Exhaust

PART #98057



ITEM	PART #	QTY	DESCRIPTION
A	999701169S-B	1	Black Ceramic Muffler Assembly
B	999701170S-B	1	Beauty Plate

**Thank you for purchasing our Gibson Exhaust system for your vehicle.
If you need further assistance, please do not hesitate to call our technical dept at (800) 528-3044
Monday through Friday, 8:00 am to 5:00 pm.**

EXHAUST INSTALLATION

PART# 98057

WHEN INSTALLING THIS EXHAUST SYSTEM MAKE SURE TO USE ALL THE PROPER SAFETY PRECAUTIONS. USE JACK STANDS WHEN UNDER VEHICLE, SET PARKING BRAKE, BLOCK TIRES AND USE SAFETY GLASSES.

DO NOT WORK WITH HOT PIPES!!!

1. Disconnect the negative battery cable before removal of the OEM Exhaust. This will allow the computer to reset and recognize the new exhaust. Lay out the exhaust on the floor so it looks like the drawing and compare parts with manual. Remove the factory exhaust by cutting behind the factory muffler. Once the tail pipe has been removed un-bolt the muffler and head pipe at the flanges located behind the catalytic converters. Use wd-40 or another type of penetrating oil to remove the rubber grommets. Do not damage these they will be re used.

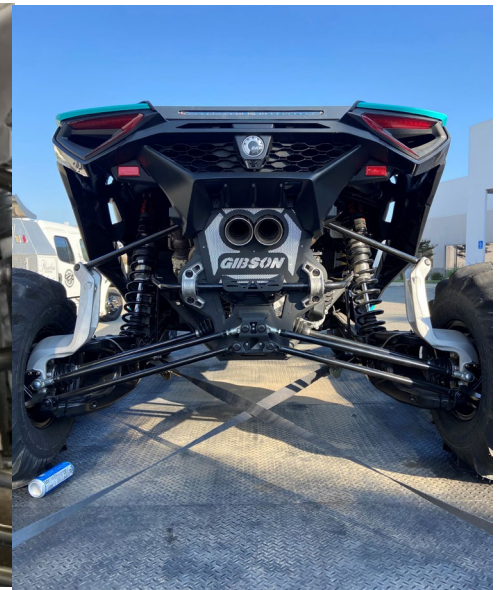
2 To remove the factory muffler, you'll need to remove the heatshield covering the head pipe which is held on by 3 10mm bolts. Then, remove the 4 springs holding on the exhaust head pipe and the 4 bolts holding the muffler to the frame of the vehicle located beneath the muffler assembly.



3. Next, install the beauty plate on the vehicle using the 4 existing bolts on the rear fascia.



4. Finally, install muffler assembly #A by fishing it through the passenger side wheel well. Be cautious and patient when fishing it into place as it is a bit of a tight fit. Be sure to wipe down exhaust before starting to remove any grease or fingerprints. This will eliminate staining after the first heat cycle.



"MAKE SURE YOU HAVE A 1" CLEARANCE ON ALL PIPES FROM ALL RUBBER BRAKE LINES, SHOCK BOOTS, TIRES, ETC..." TORQUE ALL CLAMPS TO APPROX. 100 TO 150 FT LBS.