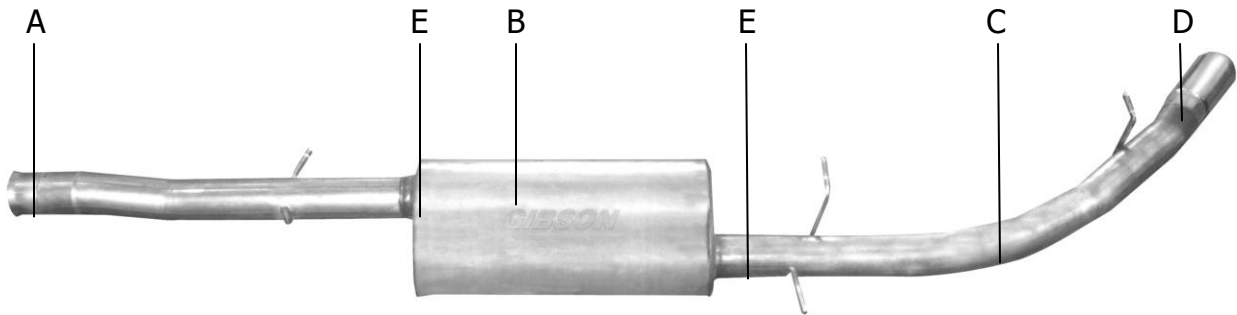




## Installation Instructions

Stainless Steel Cat-Back Single Exhaust  
GMC YUKON DENALI 1500 AWD 6.2L  
Cadillac Escalade 6.2L

Part #615635B



ITEM	PART	QUANTITY	DESCRIPTION
A	999700885S	1	3.5" HEAD PIPE WITH WELDED HANGER AND FLARE
B	11244S	1	SUPERFLOW MUFFLER
C	999700858S	1	3.5" TAILPIPE WITH WELDED HANGERS
D	500645-B	1	BLACK CERAMIC TIP
E	4170	2	3.5" CLAMP

Thank you for purchasing our Gibson Exhaust System for your vehicle.  
If you need further assistance, please do not hesitate to call our technical department at  
(800) 528 -3044 Monday through Friday, 8am to 5 pm.

# Installation Instructions #615635B

When installing this exhaust system make sure to use proper safety precautions. Use jack stands when working under the vehicle, set parking brake, block tires and use safety glasses and gloves. Allow exhaust to cool before attempting installation. Severe injury or burns could occur if safety measures are not taken.

**SUGGESTED TOOLS:** 1/2", 9/16", 13, 15mm wrenches & sockets, WD-40, hacksaw, jack stands

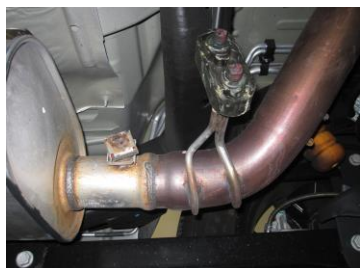
1. Disconnect the negative battery cable before removal of OEM exhaust. This will allow the computer to reset and recognize the new exhaust. Lay out the exhaust on the floor so it looks like the drawing and compare parts with manual.



2. Remove your stock tail pipe from stock muffler by cutting it off just behind the stock muffler use wd-40 to help in removal of the hangers from the rubber grommets. Leave all rubber grommets on the factory hangers and on the vehicle.



6. Install tailpipe #c into muffler 1.5-2". Insert welded hangers into rubber grommets use clamp #e to secure together. Do not tighten



3. Remove the rest of your stock exhaust from the clamp located in front of your stock muffler.



4. Install head pipe #A onto factory pipe. Use factory clamp to secure pipes together. Insert welded hanger into rubber grommet. Do not tighten.



5. Install muffler #B onto head pipe #A 1½"-2" with the louvers facing towards the converter. Use a jack stand to support the muffler. Use clamp #e to secure the muffler to the head pipe. Muffler outlet position will be about 3:00. Do not tighten. Muffler inlet is looking into the louvers.



7. Install stainless steel tip. Clamp down. When you have everything in place with proper clearance of all brake lines, axle, etc... firmly tighten all bolts and clamps down securely. Use stainless steel or aluminum cleaner to polish tips. Inspect all fasteners after 25-50 miles of operation and re-tighten as necessary.

GIBSON EXHAUST systems are designed on a factory stock vehicle. Any aftermarket products installed could increase the sound levels of the exhaust. **Make sure there is a 1" clearance from ALL rubber brake lines, shock boots, lines, tires, etc. to prevent heat related damage or fire.**