



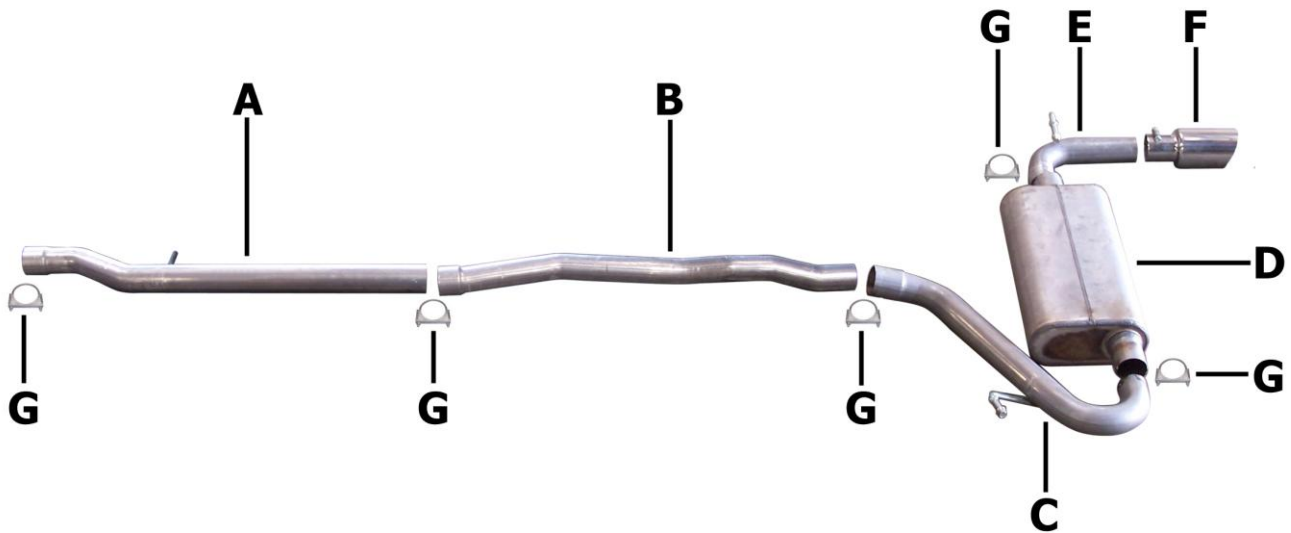
PERFORMANCE EXHAUST SYSTEMS

Installation Instructions

Cat-Back Stainless Single Exhaust

Jeep Patriot, 2.4L, 4wd

Part #617406



ITEM	PART	QUANTITY	DESCRIPTION
A	1210-700965S	1	2.25" Stainless Headpipe
B	1211-700966S	1	2.25" Stainless Intermediate Pipe
C	1164-700924S	1	2.25" Stainless Inlet Pipe
D	55161S	1	Stainless Superflow CFT Muffler
E	1165-700925S	1	2.25" Stainless Exit Pipe
F	500370	1	3.5" Stainless Tip
G	5756	5	2.25" Clamp

Thank you for purchasing our Gibson Exhaust System for your vehicle.
If you need further assistance, please do not hesitate to call our technical department at
(800) 528 -3044 Monday through Friday, 8am to 5 pm.

Installation Instructions #617406

When installing this exhaust system make sure to use proper safety precautions. Use jack stands when working under the vehicle, set parking brake, block tires and use safety glasses and gloves. Allow exhaust to cool before attempting installation. Severe injury or burns could occur if safety measures are not taken.

SUGGESTED TOOLS: 1/2", 9/16", 15mm wrenches & sockets, WD-40, hacksaw, jack stands

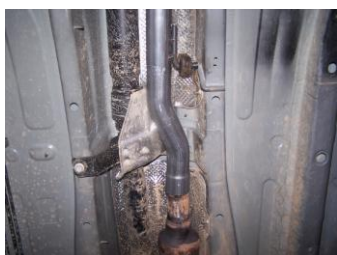
1. Disconnect the negative battery cable before removal of OEM exhaust. This will allow the computer to reset and recognize the new exhaust. Lay out the exhaust on the floor so it looks like the drawing and compare parts with manual.



2. To remove your stock exhaust, unclamp it after the catalytic converter. Disengage the welded hangers from the rubber grommets. Use WD-40 to aid in this process. Do not damage or remove the rubber grommets as you will reuse them to mount your new system.



6. Slide muffler #D over inlet pipe 1.5-2". Secure with clamp #G. Do not tighten.



3. Slide headpipe #A over stock pipe. Secure using clamp #G. Do not tighten. Use a jack stand to support the converter. Insert welded hanger into rubber grommet.



7. Slide exit pipe #E into muffler 1.5-2". Insert welded hanger into rubber grommet. Secure with clamp #G. Do not tighten.



4. Slide intermediate pipe #B over headpipe. Use clamp #G to secure. Do not tighten.



8. Install stainless steel tip. Clamp down. When you have everything in place, firmly tighten all clamps down securely. Use stainless steel cleaner and a Scotch Brite pad weekly to prevent tip from discoloration. Inspect all fasteners after 25-50 miles of operation and re-tighten as necessary.



5. Slide inlet pipe #C over the intermediate pipe. Insert welded hanger into rubber grommet. Secure with clamp #G. Do not tighten.

GIBSON EXHAUST systems are designed on a factory stock vehicle. Any aftermarket products installed could increase the sound levels of the exhaust. **Make sure there is a 1" clearance from ALL rubber brake lines, shock boots, lines, tires, etc. to prevent heat related damage or fire.**