



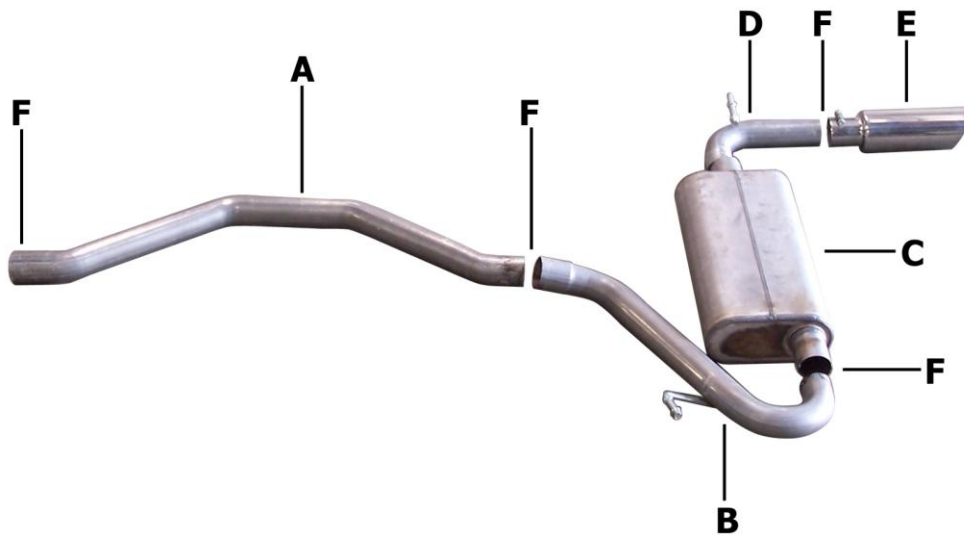
Installation Instructions

Cat-Back Single Exhaust

Dodge Caliber, 2.0L, 2wd

Jeep Compass, 2.4L, 2wd

Part #317003



ITEM	PART	QUANTITY	DESCRIPTION
A	700923	1	2.25" Headpipe
B	700924	1	2.25" Inlet pipe w/ welded hanger
C	55161	1	Superflow CFT Muffler
D	700925	1	2.25" Exit pipe w/ welded hanger
E	500395	1	3.5" Stainless tip
F	5756	4	2.25" Clamp

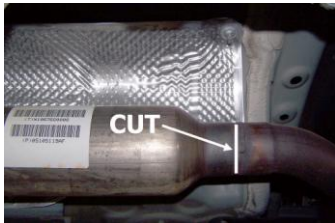
Thank you for purchasing our Gibson Exhaust System for your vehicle.
If you need further assistance, please do not hesitate to call our technical department at
(800) 528 -3044 Monday through Friday, 8am to 5 pm.

Installation Instructions #317003

When installing this exhaust system make sure to use proper safety precautions. Use jack stands when working under the vehicle, set parking brake, block tires and use safety glasses and gloves. Allow exhaust to cool before attempting installation. Severe injury or burns could occur if safety measures are not taken.

SUGGESTED TOOLS: 1/2", 9/16", 15mm wrenches & sockets, WD-40, hacksaw, jack stands

1. Disconnect the negative battery cable before removal of OEM exhaust. This will allow the computer to reset and recognize the new exhaust. Lay out the exhaust on the floor so it looks like the drawing and compare parts with manual.



2. To remove the stock exhaust, cut right before the weld just after the stock resonator. Disengage the welded hangers from the OEM rubber grommets. Use WD-40 to aid in this process. Do not damage or remove the rubber grommets as you will reuse them to mount your new system.



5. Now slide muffler #C onto inlet pipe 1.5-2". Secure with clamp #F, do not tighten.



3. Slide headpipe #A onto stock resonator and secure with clamp #F. Use a jack stand to support the converter. Do not tighten clamp.



6. Next, slide exit pipe #D into muffler 1.5-2". Insert welded hanger into rubber grommet. Secure with clamp #F, do not tighten.



4. Next, slide inlet pipe #B onto headpipe #A. Insert welded hanger into rubber grommet. Secure with clamp #F, do not tighten.



7. Install stainless steel tip. Clamp down. When you have everything in place, firmly tighten all bolts and clamps down securely. Use stainless steel cleaner and a Scotch Brite pad weekly to prevent tip from discoloration. Inspect all fasteners after 25-50 miles of operation and re-tighten as necessary.

GIBSON EXHAUST systems are designed on a factory stock vehicle. Any aftermarket products installed could increase the sound levels of the exhaust.

Make sure there is a 1" clearance from ALL rubber brake lines, shock boots, lines, tires, etc. to prevent heat related damage or fire.