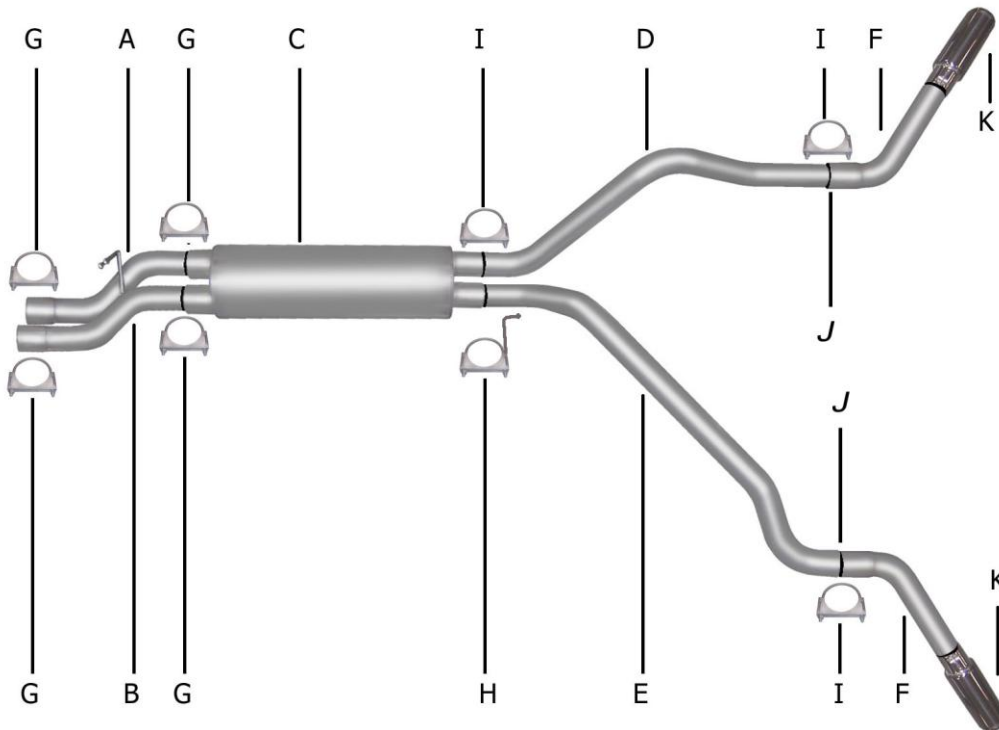




INSTRUCTION MANUAL
CAT-BACK DUAL EXTREME EXHAUST
SILVERADO/ SIERRA TRUCK 2500HD/3500 6.0L, 8.1L 2/4WD
EXTENDED CAB, LONG BED
CREW CAB, SHORT & LONG BED
PART # 5009



ITEM	PART #	QUANTITY	DESCRIPTION
A	700444	1	3" PASS SIDE HEADPIPE WITH HANGER
B	700329	1	3" DRIVERSIDE HEADPIPE
C	766300	1	SUPERFLOW MUFFLER
D	700445	1	2-½" PASS SIDE OVERAXLE TAILPIPE
E	700446	1	2-½" DRIVERSIDE OVERAXLE TAILPIPE
F	700448	2	2-½" EXIT PIPE
G	OHD300	4	3" CLAMP
H	4159	1	REAR MUFFLER HANGER
I	5757	3	2 ½" CLAMP
J	4201	2	TAILPIPE HANGERS
K	500374	2	3 ½" STAINLESS STEEL TIPS

Thank you for purchasing our Gibson exhaust system for your vehicle. If you need further assistance, please do not hesitate to call our technical dept at (800) 528-3044 Monday through Friday, 8:00 am to 5:00 pm.

EXHAUST INSTALLATION #5009

When installing this exhaust system make sure to use proper safety precautions. Use jack stands when under the truck, set parking brake, block tires and use safety glasses and gloves.

DO NOT WORK WITH HOT PIPES!

SUGGESTED TOOLS:

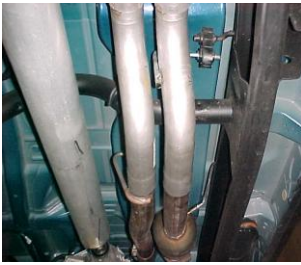
1/2", 9/16", 15mm wrench and socket, Wd-40, Hacksaw, Jack Stand



Lay out the exhaust on the floor so it looks like the drawing and compare parts with manual. To remove the stock exhaust cut 13" just in front of the muffler. Leave all rubber grommets in place. Use WD-40 to aid in removal of exhaust and hangers. Use hacksaw to cut tailpipe off.



Install driverside overaxle tailpipe (#E) into muffler 1 1/2" to 2". Support end of tailpipe with jack stand and attach to hanger (#H).



Install driverside headpipe (#B). Then install headpipe (#A) and insert welded hanger into rubber grommet. Secure both pipes with clamp (#G). Do not tighten.



Install the passenger side over axle tailpipe (#D) into muffler 1 1/2" to 2". Secure with clamp (#I). Do not tighten.



Install muffler (#C) onto head pipes 1-1/2" to 2" with the louvers facing towards the converter. Use a jack stand to support the muffler. Use clamps (#G) to secure the muffler to the head pipes. Do not tighten



Install tailpipe hangers (#J) onto end of tailpipes using clamp (#I). There will be about a 2" hole above the end of both tailpipes on the frame to bolt the hangers. Do not tighten.



Next, install rear muffler hanger (#H) onto driver's side muffler outlet and insert hanger into rubber grommet. Do not tighten.



Install exit pipes (#F). Use clamps (#I) to secure exit pipes to tailpipes. These clamps also attach to the metal hangers. Rotate to adjust for clamping. Now go back and tighten up all clamps, nuts, and bolts.

Then install stainless steel tips and tighten.

MAKE SURE YOU HAVE A 1" CLEARANCE FROM ALL BRAKE LINES, SHOCK BOOTS, TIRES, FUEL LINES, ETC...