

SANDADDICTION.COM U.S. \$2.00

SAND ADDICTION

JUNE/JULY 2003-ISSUE 1

W
Performance Parts
the market!

Hi-Performance
Motorsports Show

Del Mar, California

Extreme
SPORTS

o meets Big Blue

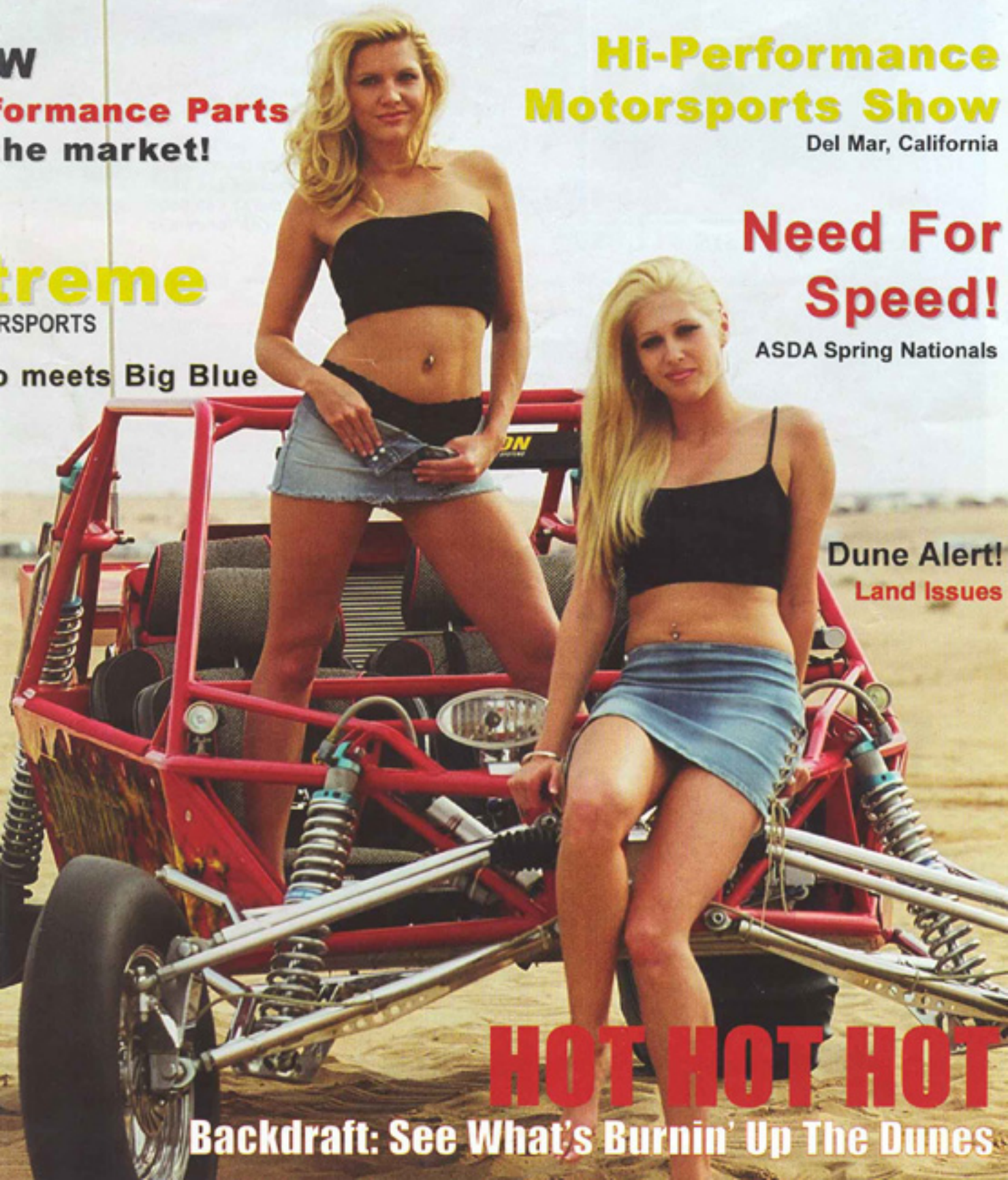
Need For
Speed!

ASDA Spring Nationals

Dune Alert!
Land Issues

HOT HOT HOT

Backdraft: See What's Burnin' Up The Dunes





JUNE/JULY 2003

Features

2003 ASDA Spring Nationals	8
Cover Vehicle	20
Feelin' The Heat: Backdraft	
Dumont Cleanup	30
Extreme Motorsports	32
Speed Sports Expo 2003	36

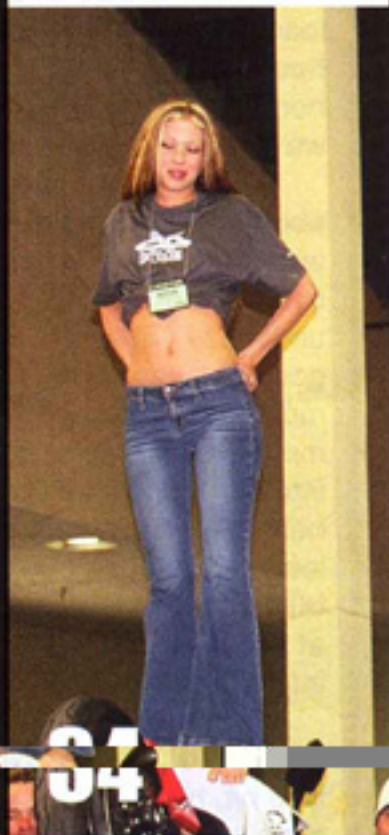
The Regulars

'Round The Pit	6
Land Issues	14
At The Bar	18
Tech Spot	19
Sand Bunny	25
In The Dunes	26
Performance Parts	29

CONTENTS

DUNERS
Duners Undoing Needless
Environmental Restrictions
www.duners.com

28



25



30



18

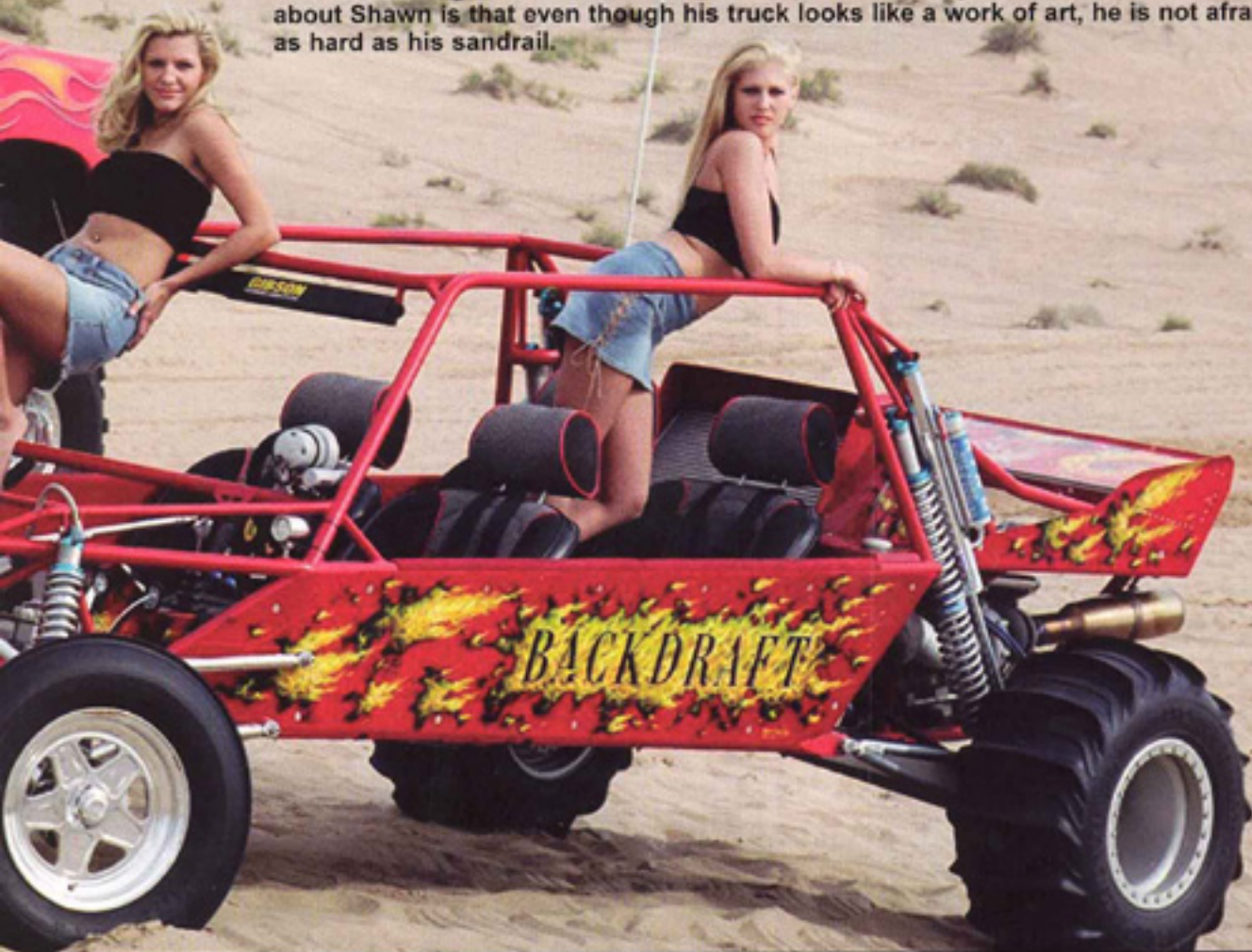


feelin' the heat

BACKDRAFT

If there's one thing that I love about going to the dunes, it's seeing the amount of creativity that people devote to their machines. Corona resident, Shawn Gibson, owns one of the most well-known sandrails out there today, Backdraft. Not only does it possess an eye-catching paintjob, but there is also a lot of spark that justifies his wicked theme. His 550-horse-powered, turbo-charged motor controlled by a 4-speed Mendeola transmission sure makes it effortless for Shawn to burn through the dunes.

But hold on a sec, there is yet another addition to this hot collection. If you haven't already noticed, Shawn has also devoted time into his 2001 Chevy 3500 HD Crew Cab Truck. From his chrome-plated track bars to his flame-designed leather interior and his 44" Super Swampers to his 6.8L Duramax turbo diesel engine, you can definitely tell that Shawn pays attention to major details. This is what sets his vehicle apart from others. What I like most about Shawn is that even though his truck looks like a work of art, he is not afraid to drive it as hard as his sandrail.





Above: One of Backdraft's popular features is the unique graphic on the wing painted by Rods And Rides. The slogan "Get 'Em Hot, Leave 'Em Wet" is a definite attention-grabber, especially to the ladies.



Builder: Suspensions Unlimited
Frame/Chassis: Suspensions Unlimited
Materials: 4130 chromoly tubing
Wheel Base: 130"
Width: 92"
Wheel Travel: 19"
Weight: 1580 lbs.

Pedals: CNC
Seats: Beard
Shifter: Custom-made by Suspensions Unlimited



Transaxle: MD 4S 2D Mendeola
Builder: Rancho Performance, Anaheim, CA
Ring & Pinion Ratio: 5.24 Ring (2.90 1st, 1.86 2nd, 1.44 3rd, 1.14 4th)
CV: 930 W/ Race Cages
Brakes: CNC Front
Rims: CMS (15" front and rear w/ bead locks)
Tires: Sand Tires Unlimited



Engine: Rotary by Redline
Turbo, Fuel-Injected, Intercooled
Shocks: King - *Front:* 8.5" coil shock
Rear: 14" coil shock, 16" bypass
Aluminum Work: Amil Miller
Powder-Coat: Olympic Powder Coating
Chroming: United Custom Polishing
Graphics: Rod And Rides



